

Winchelsea Primary School
PE Premium - End of year report 2015/16

Allocation: £8,750

Headlines

- Gold Sainsbury's School Games Kitemark (Bronze 13/14, Silver 14/15)
- £5420 invested in coaching support including; curriculum mentoring, after school club coaching, PE action/development planning and auditing, increased amount of competition
- Increased the number of KS2 children in extra-curricular to 75% (61% in 2014/15)
- Increased the total number of children representing the school in sporting activity

Honours

- Winners of inter-school Judo team competition
- Second place in the School Sport Partnership Dance Competition qualifying for county finals
 - *Subsequently asked to perform at the county Summer School Games*
- Entered 35 level 2 sport events/festivals (6 in the previous year) and the SADSFA Football League

CPD

Workshops	Co-delivery / mentoring	
<ul style="list-style-type: none"> • Carre's PE Conference 	<p>Ks1/EYFS</p> <ul style="list-style-type: none"> • Fiona Cox Sending • Megan Davies Jumping • Ali Stewart FUNdamentals • Megan Davies Small Sided Games • Fiona Cox Balance 	<p>LKs2</p> <ul style="list-style-type: none"> • Justine Couling Invasion Games • James Keetch Invasion Games • Justine Couling Net/Wall Games • James Keetch Net/Wall Games • Justine Couling Cricket • James Keetch Cricket <p>UKs2</p> <ul style="list-style-type: none"> • Avis Byatt Netball • Suzzie Reid Circuit Training • Avis Byatt Handball • Suzzie Reid Volleyball • Avis Byatt Orienteering • Suzzie Reid Health & Fitness

Competitive opportunities

Inter (against other schools) / Level 2	Intra ('in house') / Level 1
<ul style="list-style-type: none"> • Archery • Athletics • Badminton • Basketball • Boccia • Cricket • Cross-country • Cycling • Fencing • Football • Gymnastics • Handball • Hockey 	<ul style="list-style-type: none"> • Judo • Lacrosse • Netball • Orienteering • Rowing • Rugby Union • Sailing & Windsurfing • Sports Hall Athletics • Table Tennis • Tennis • Triathlon • Volleyball • Wheelchair Basketball

Extra-curricular

Delivered by staff	Delivered by/with outside agency
<ul style="list-style-type: none">• KS1 Mini Kickers• Dance• KS2 Football• Tag Rugby	<ul style="list-style-type: none">• Kwik Cricket• Boxercise• KS1 Gymnastics• Change4Life• Weekly multi-sports club

Areas for development:

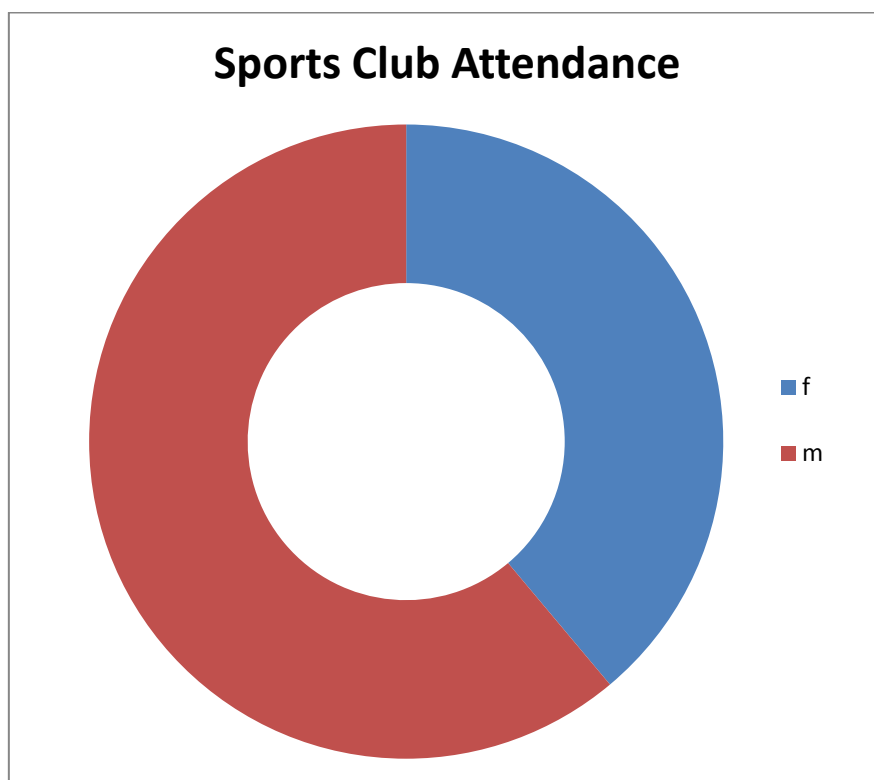
1. To work towards Outstanding PE for all
2. To maintain a broad range of sporting opportunities throughout the whole school
3. To maintain the GOLD Games Mark
 - a. Collect more evidence of the intra-school Level 1 sports programmes
 - b. Continue to increase the number of Ks2 children in weekly extra-curricular sport

Support for 2016/17

- Carre's Outreach team
 - PE/Sport Advisor visit termly
 - KS1 Physical Literacy Coach – 1 hour every week developing fundamental movement skills
 - Y3/4 Physical Literacy Coach – 1 hour every week with 3 themes
 - Y5/6 Sports Coaching by secondary specialist PE staff
 - Weekly after school sports club
 - Fitness profiling

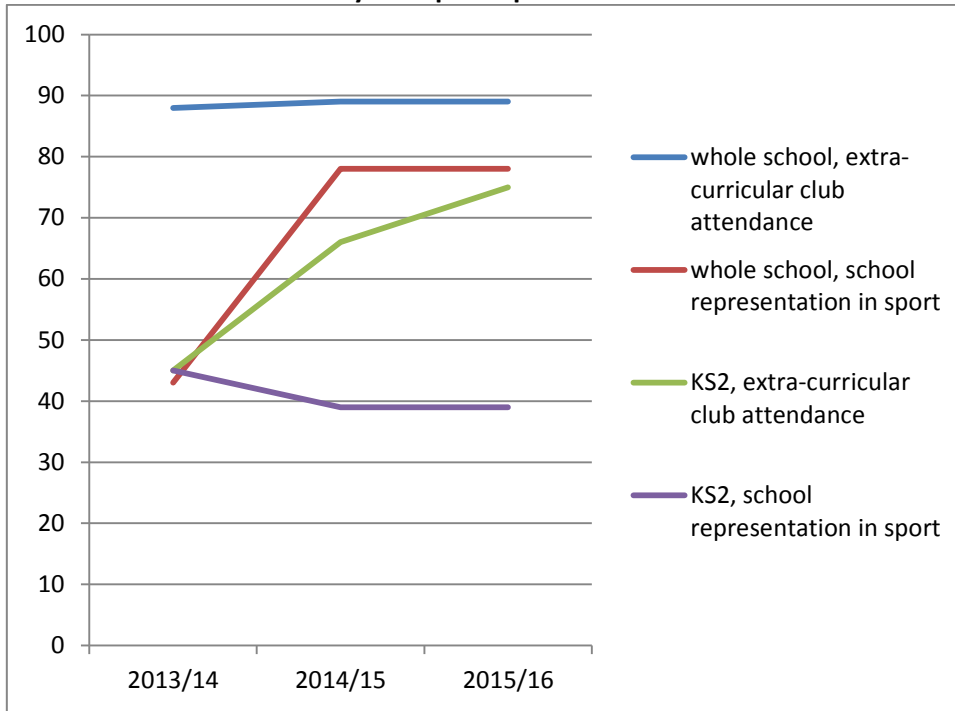
Data Analysis

Breakdown of after-school sports club participation by gender

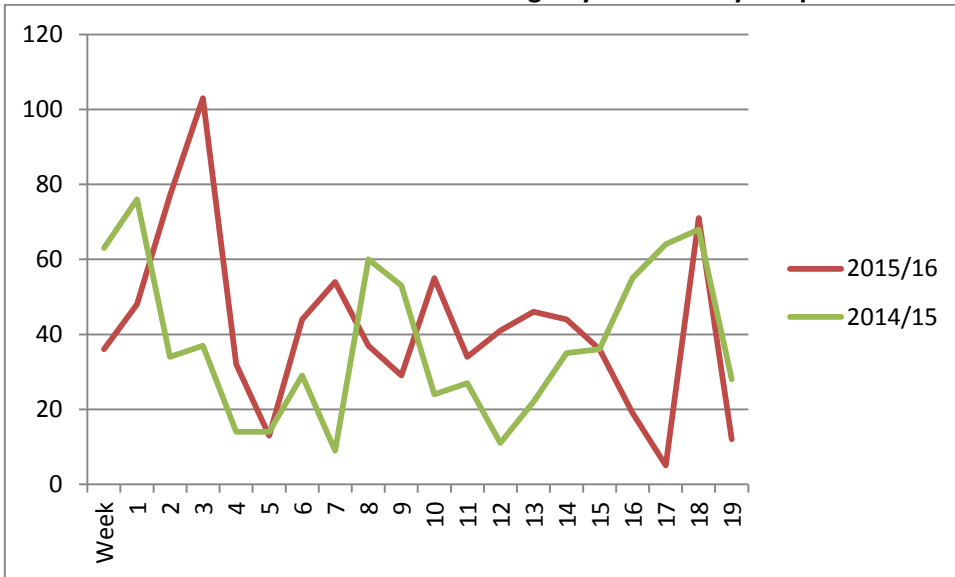


There has been a significant shift in the percentage attendance of boys in clubs since 2014/15

Analysis of participation trends



Golden Time – Number of children making Physical Activity or Sport choices



Golden Time analysis indicates children's attitude towards choosing sport/physical activity.



PE and Sport Premium Budget 2015/16

Winchelsea, Ruskington

DfE allocation £8,750

Area	Date	Item	Cost	quality/breadth?
HQPE	Sep-15	PE Advisor (Matt Evans)	800	<i>both</i>
	Sep-15	yst membership	270	<i>both</i>
	Sep-15	Physical Literacy Coach KS1 - Ricky	1500	<i>quality</i>
	Sep-15	Physical Literacy Coach Y3/4 - Dom	1500	<i>quality</i>
	Sep-15	Year 5/6 Weekly outreach	1500	<i>quality</i>
	Jan-16	Carre's PE conference	50	<i>both</i>
	on going	Cover for release time for PE coordinator	500	<i>both</i>
	on going	mileage for visiting staff	500	<i>both</i>
			Sub tot:	6620
Competition	Sep-15	Festival Fridays	300	<i>breadth</i>
	Mar-15	School Games Day resources	150	<i>breadth</i>
	on-going	Transport to competitions	500	<i>breadth</i>
				Sub tot:
Health	May-16	Change4Life club coaching	200	<i>quality</i>
	Jun-16	Fitness Profiling Assessments	400	<i>quality</i>
				Sub tot:
Community	Termly	Community Coaches delivering clubs	500	<i>breadth</i>
				Sub tot:

Total £8,670.00

Spent 99.09%