

Emerald Class, Summer 1, 2026

Welcome back, Emerald!

This half-term, we will be learning about many new topics.

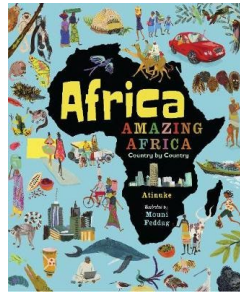
If you have any questions, please come to see us at the classroom door.

Our parental engagement sessions will be on Monday 18th May at 2.30 pm.

Mr Rushton & Mrs Morley

As mathematicians, we will focus on 3 main topics:

- . fractions
- . decimals
- . money



In writing lessons, we will be focusing on **persuasive** and **poetry** texts.

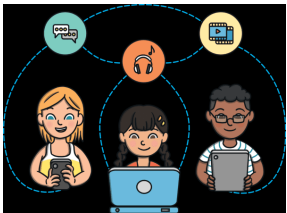
In RE, our key question will be **What do people believe about the afterlife?**



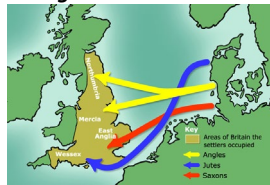
In DT, we will be **making biscuits!**



In PSHE, we will be learning about **internet safety**.



In history, we will be learning about the **Saxons** and the **Vikings**.



Winchelsea Primary School

'All individuals matter'



As musicians, we will continue focusing on **pulse and rhythm** with Mr Roberts.

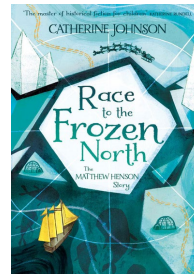
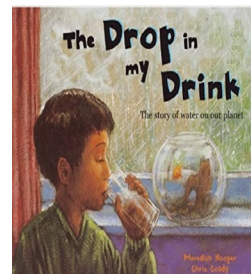
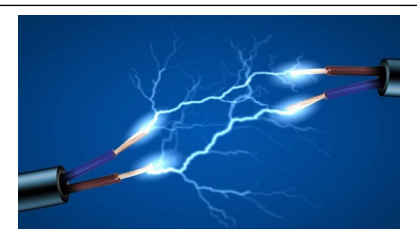


We will be learning about **wheelchair sports** and **striking & fielding**.



Our PE days will be Mondays and Wednesdays. Please ensure your child has their indoor and outdoor kits every day as poor weather could alter our plans.

As scientists, we will learn about **electricity**.



We will be reading **Race to the Frozen North**, which tells the amazing story of Matthew Henson (the Arctic explorer).

We will also be reading **The Drop in my Drink** by Meredith Hooper. The book follows the story of a drop of water and how this links with the origins of water on our planet.